



mPOP Printer Software Installation Manual

Contents

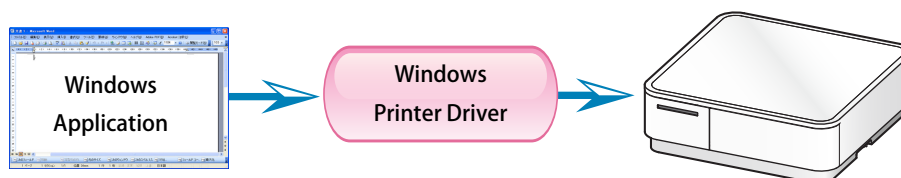
1. Software Overview	1
1.1 Windows Printer Driver	1
1.2 Printer Utility	2
1.2.1 Starting the Printer Utility.....	2
1.2.2 Printer Utility Functions.....	3
2. Operating Environment	6
2.1 Operating System	6
3. Installation	7
4. Uninstallation	10
5. Revision History	12
Appendix 1. Pairing with Bluetooth in Windows.....	13

1. Software Overview

mPOP printer software package contains the Windows printer driver and a printer utility. To use the software package, follow the procedure given in chapter 3, "Installation," and then turn the printer on.

1.1 Windows Printer Driver

The Windows printer driver is used when files are printed from Windows applications.

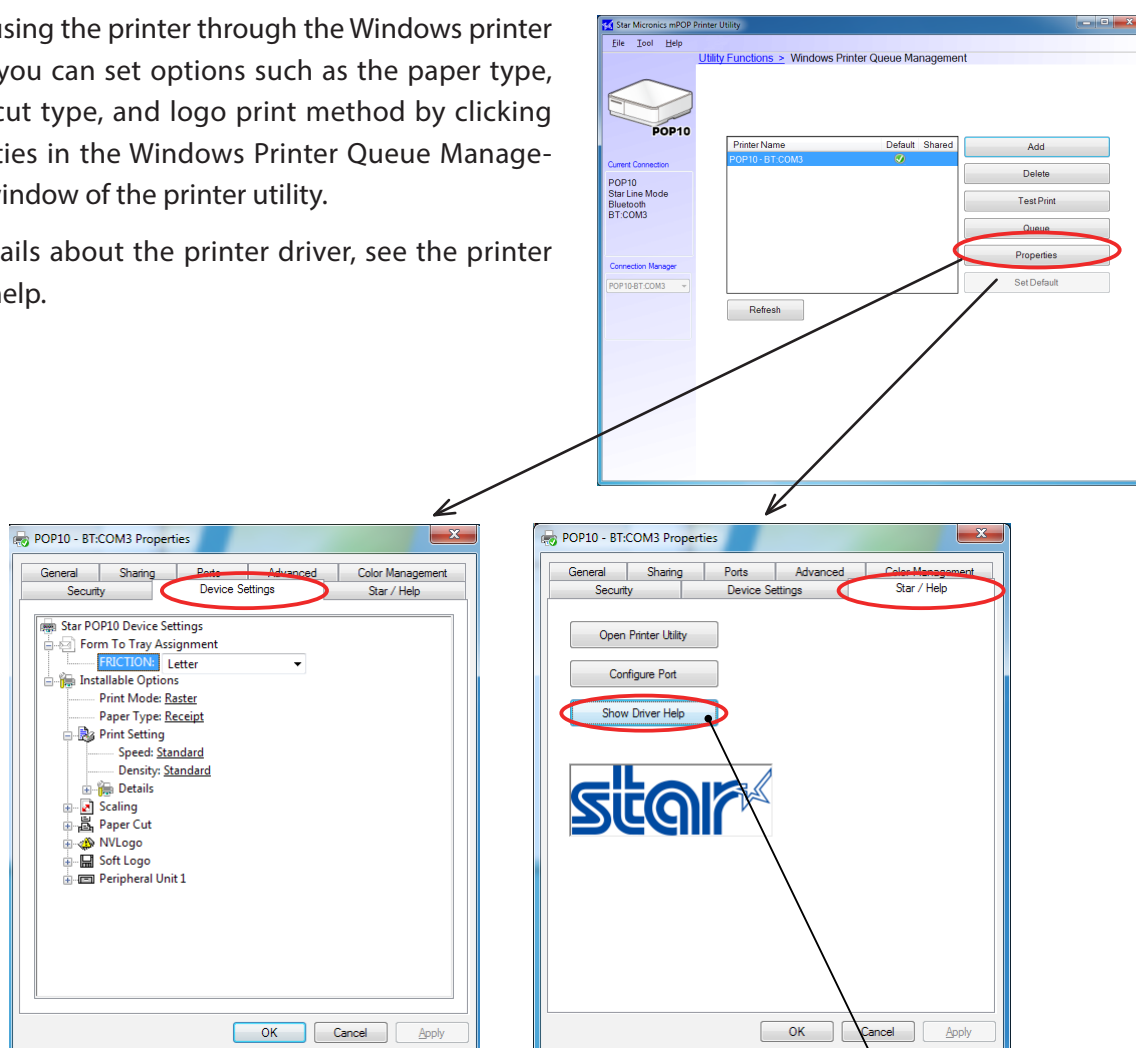


Install the mPOP Printer Software, and then connect a printer with a USB interface to the PC. The Plug and Play feature will enable the Windows printer driver automatically.

To use the Windows printer driver when you are connecting to the printer through an bluetooth interface, install the driver from the Windows Printer Queue Management window of the printer utility.

When using the printer through the Windows printer driver, you can set options such as the paper type, paper cut type, and logo print method by clicking Properties in the Windows Printer Queue Management window of the printer utility.

For details about the printer driver, see the printer driver help.



Starting the Printer Utility Help

1.2 Printer Utility

The printer utility is used to connect to the printer and to set various options.

It can be used in conjunction with the Windows printer driver, OPOS driver, and in numerous other environments.

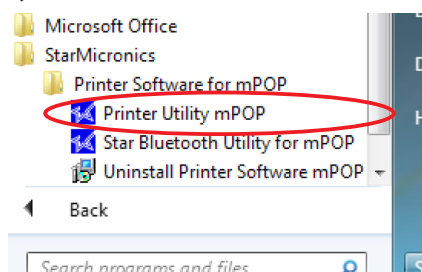
The printer utility is used over a specific "Connection" ("Connection" has specific properties the connection method).

For details on how to configure connections and on the utility functions, see the printer utility help.

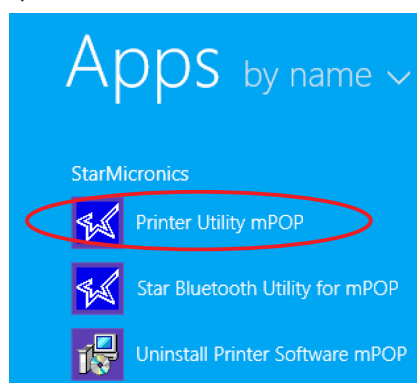
1.2.1 Starting the Printer Utility

- ① On the Windows taskbar, click 'Start', and then click 'All Programs' > 'Star Micronics' > 'Printer Software for mPOP' > 'Printer Utility mPOP'.

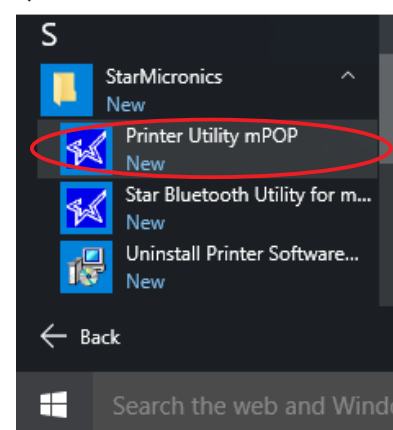
❖ Windows7



❖ Windows8 / 8.1



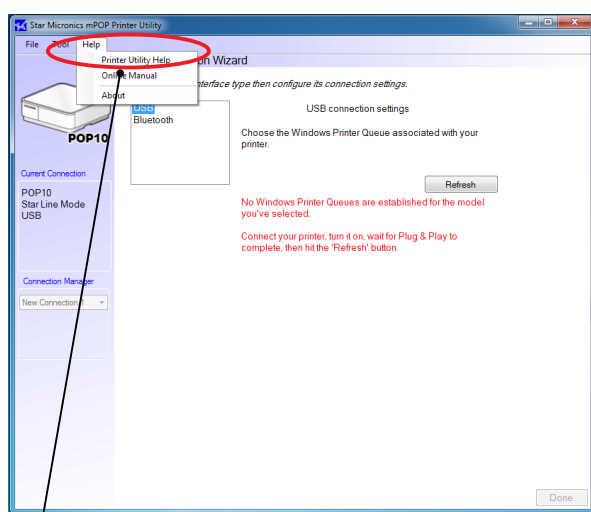
❖ Windows10



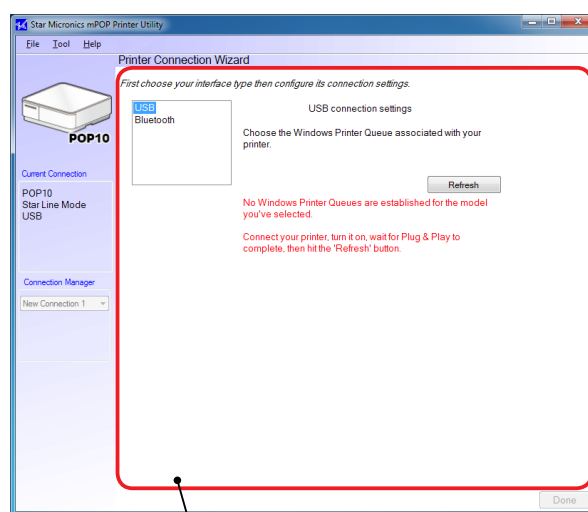
- ② The 'User Account Control' dialog appears. Click 'Yes'.

- ③ The printer utility window opens.

When you start the printer utility for the first time, the 'Printer Connection Wizard' appears. Please choose the interface to create a connection. You will be able to use the printer utility functions through the connection that you created.



Starting the Printer Utility Help



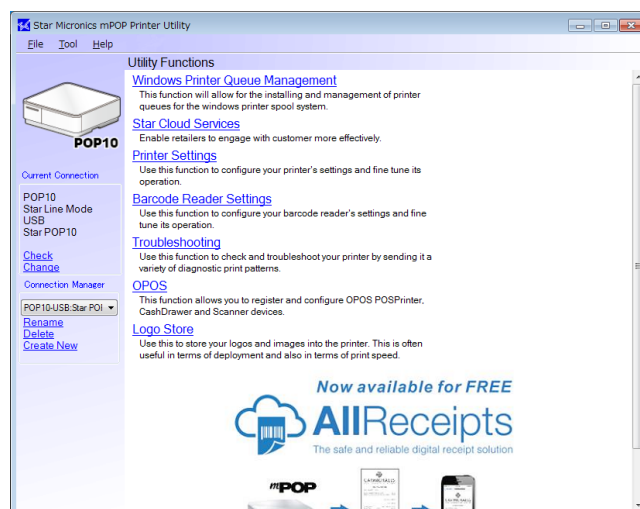
Printer Connection Wizard

1.2.2 Printer Utility Functions

■ Utility Functions

Click a link in the list of utility functions to display the properties of the corresponding function.

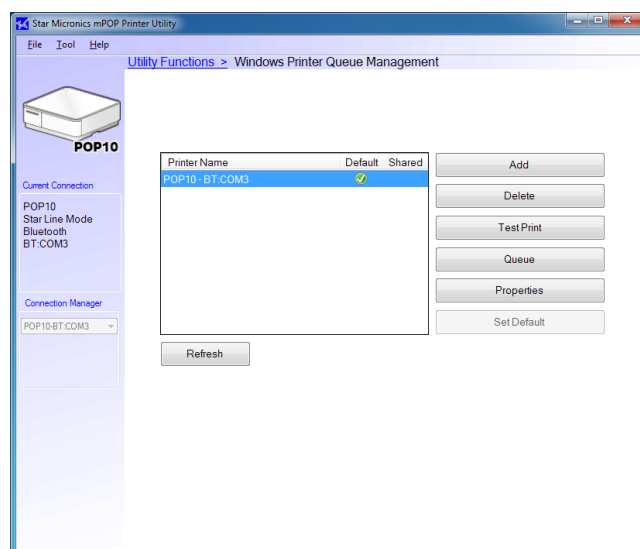
The printer utility is used over a specific connection (each connection has specific properties such as the connection method).



◆ Windows Printer Queue Management

Windows Printer Queue Management can be used to create and manage the printer queues of the Windows print spooler system.

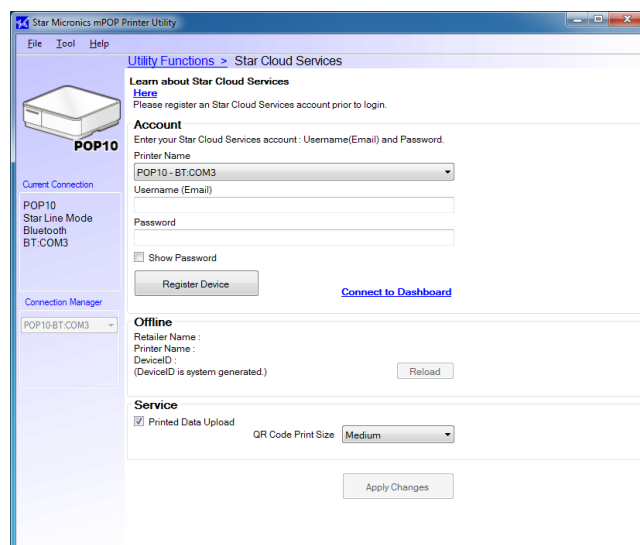
To use the printer driver when you are connecting to the printer through an bluetooth interface, install the Windows printer driver from this function.



◆ Star Cloud Services

Register the device (mPOP printer queue) using your registered Star Cloud Services account. Once you have registered the device, you can use the service of uploading print data to the cloud server and manage the registered device from the Star Cloud Services dashboard.

To use this function, set the print mode to "Raster" from the Printer properties in the printer driver. This function is only available when the Print Mode setting is configured to "Line".

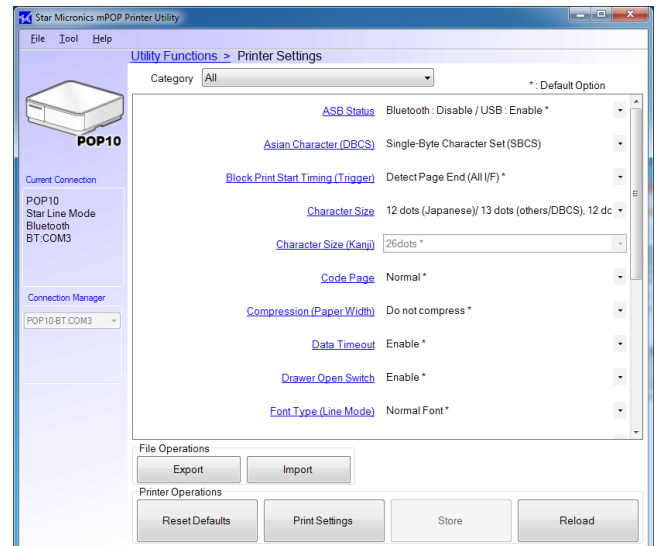


◆ Printer Settings

You can change the printer settings (memory switch settings) according to your needs.

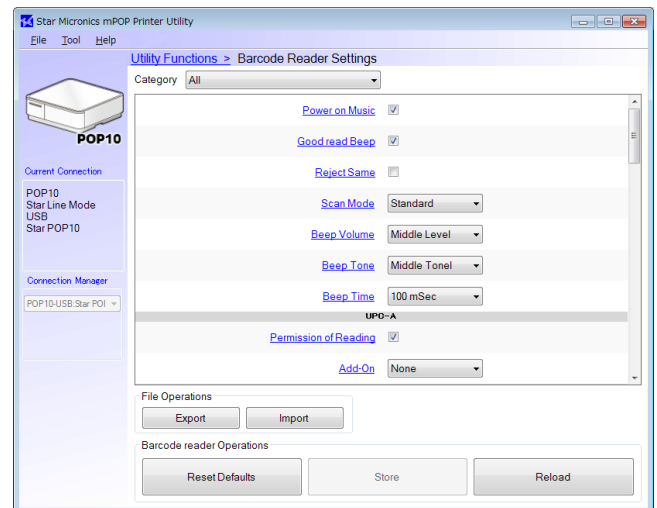
What are memory switches ?

You can configure the basic settings of a printer and store them in memory switches on the printer.



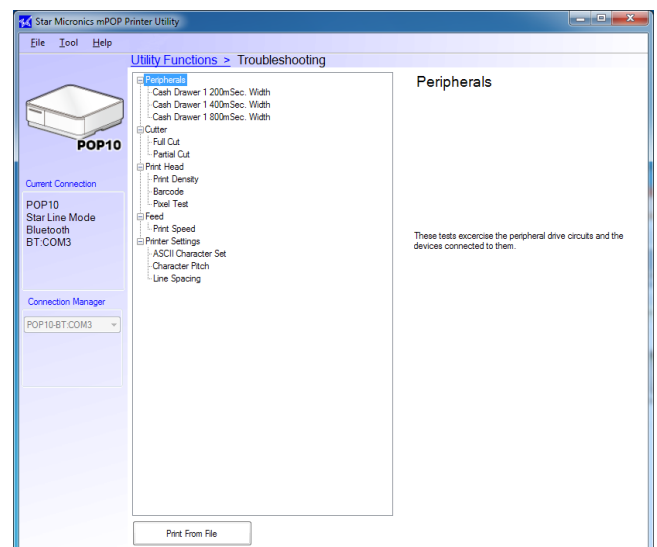
◆ Barcode Reader Settings

You can change the barcode reader settings according to your needs.



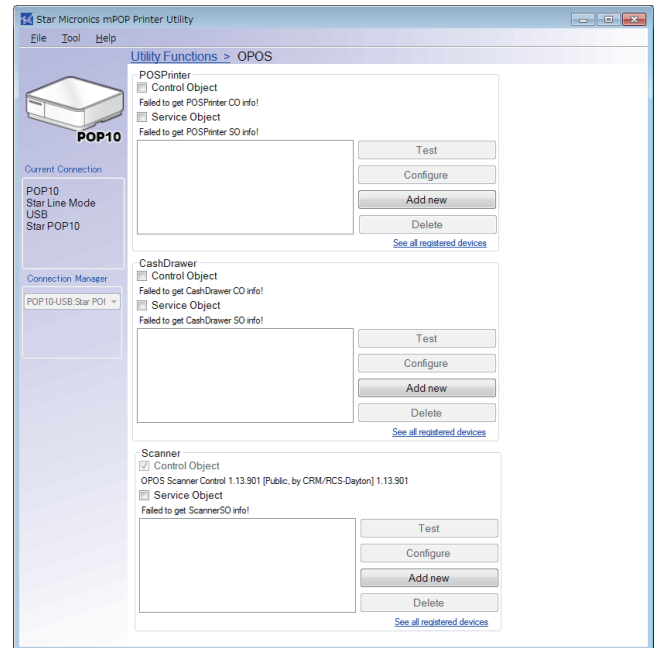
◆ Troubleshooting

You can check the operations of various printer functions.



♦ OPOS

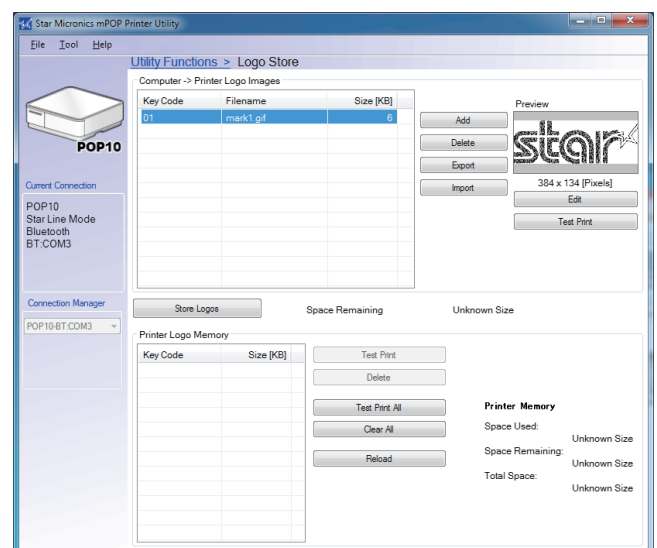
You can store, configure, and perform similar tasks for OPOS POS printer devices cash drawer devices and Scanner devices (Barcode Reader).



♦ Logo Store

You can store logos (image data) in the printer's memory.

By storing logo and other image data that is printed frequently, you can expect increased print throughput, because there is no need to send the data every time you print.



2. Operating Environment

2.1 Operating System

This software supports the following operating systems.

- ◆ Microsoft Windows 7 32bit/64bit
- ◆ Microsoft Windows 8* 32bit/64bit (except Windows RT)
- ◆ Microsoft Windows 8.1* 32bit/64bit (except Windows RT)
- ◆ Microsoft Windows 10* 32-bit and 64-bit (except Windows 10 Mobile and Windows 10 IoT Core)

*Limitation for Windows 8 / 8.1/ 10

- Star original Printer Driver Function (e.g. Logo Setting) can not be changed from "Modern UI".
However, once the setting of its function is changed from "Desktop UI", these function can be used on "Modern UI" as well.
- USB Printer will not be appeared in [Device and Printer] if its power is off.
- Error status (e.g. Paper empty during printing) will not be shown in "Modern UI".

3. Installation

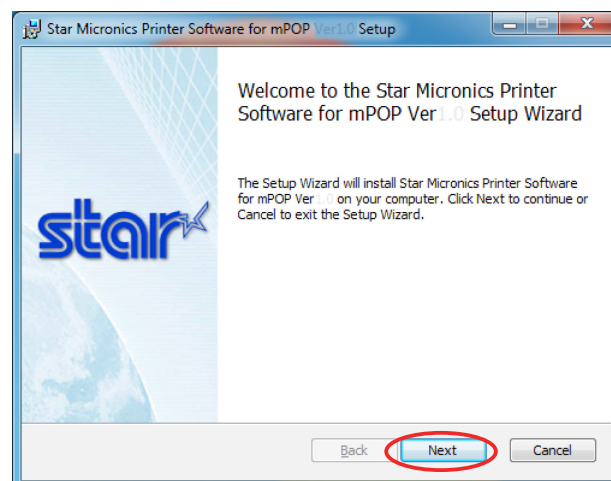
Important:

- Administrator privilege is required to run the installation.

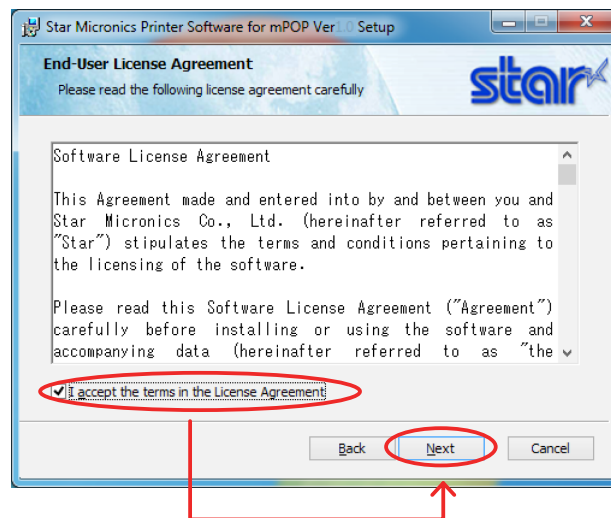
Follow the instructions below to install the software.

Note: If you are connecting to the printer by USB, carry out the instructions in chapter 3, "Installation," and then turn the printer on.

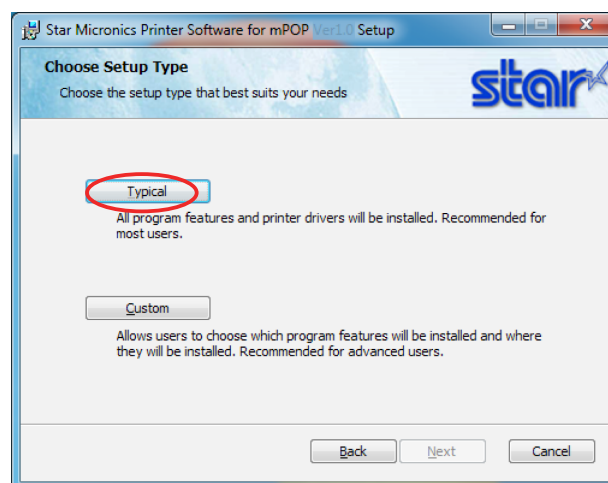
- ① Download "starprnt_mpop_v1.3_setup_32/64bit.zip" file from Star's website and save it.
- ② Unzip the zip file, and execute "setup.exe" in the root folder.
- ③ Follow the instructions from ④ to complete the installation.
- ④ The 'User Account Control' dialog appears. Click 'Yes'.
- ⑤ Click 'Next'.



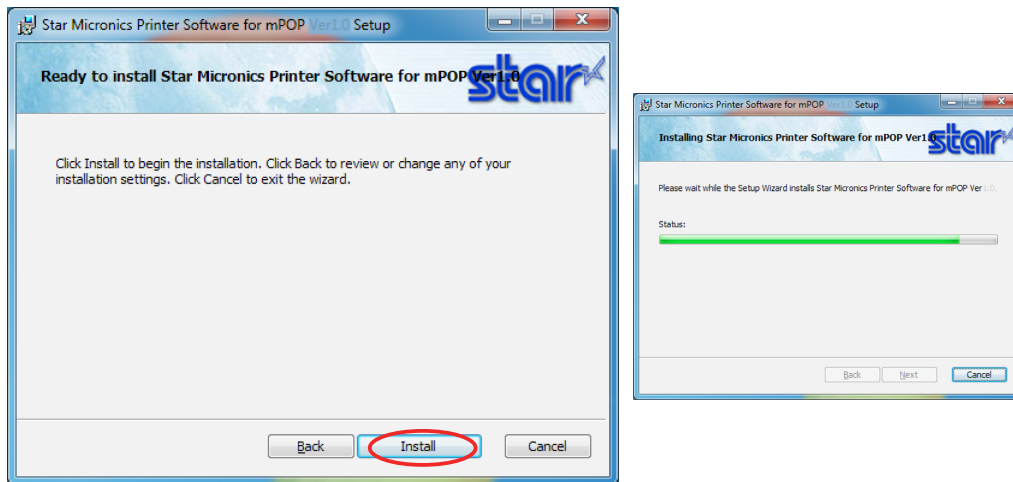
- ⑥ The End-User License Agreement, an agreement for installing the software, appears. Read the agreement. If you agree with the terms, select the 'I accept the terms in the License Agreement' check box, and then click 'Next'.



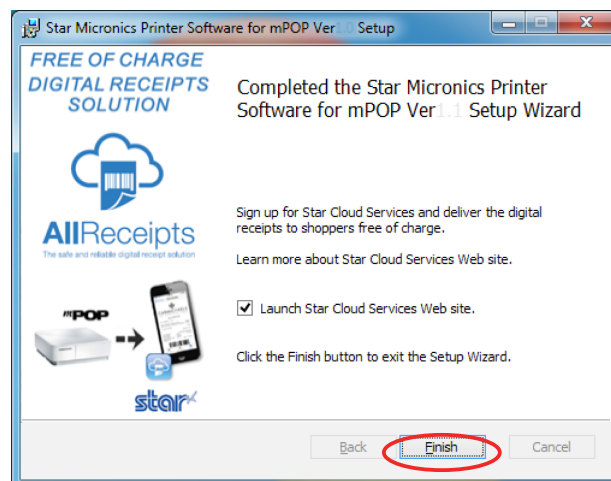
- ⑦ Choose the setup type.
Click 'Typical' to install the all program features. Always select this option unless you have a specific reason. Click 'Custom' to install only the program features that you will need.



- ⑧ Click 'Install' to start the installation.



- ⑨ When the software installation completes, the following window appears.
Click 'Finish' to close the wizard.



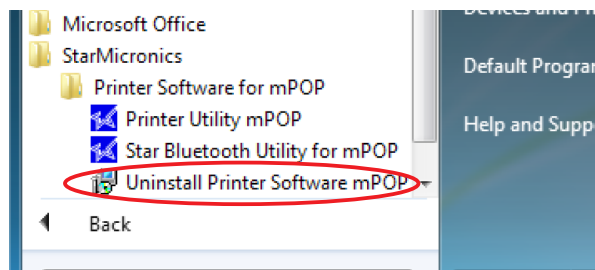
4. Uninstallation

Follow the procedure below to uninstall the software.

① Turn the printer power switch off.

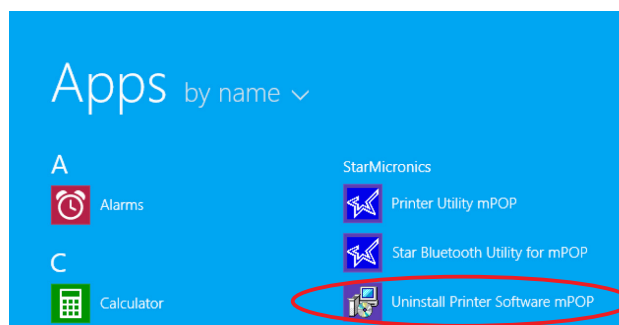
② ❖ In Windows7

On the Windows taskbar, click 'Start', and then click 'All Programs' > 'Star Micronics' > 'Printer Software for mPOP' > 'Uninstall Printer Software mPOP'.



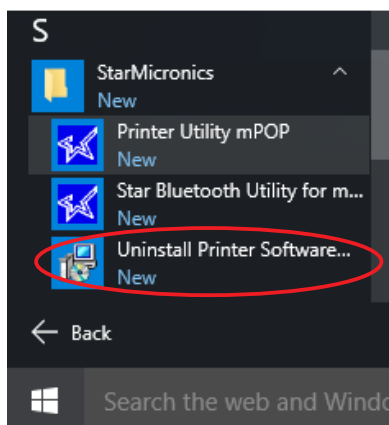
❖ In Windows8 / 8.1

On the Apps, select [Star Micronics]-[Uninstall Printer Software mPOP].



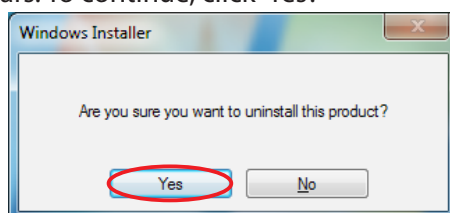
❖ In Windows10

On the Windows taskbar, click 'Start', and then click 'All Apps' > 'Star Micronics' > 'Uninstall Printer Software mPOP'.

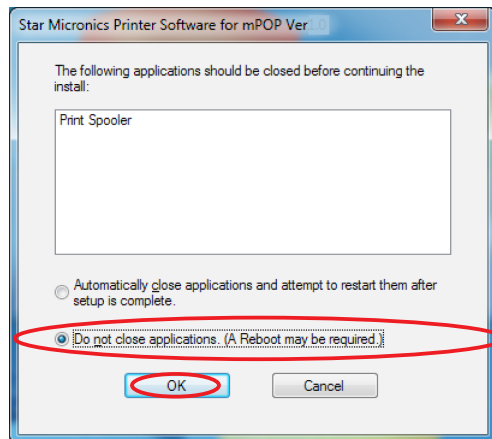


③ The 'User Account Control' dialog appears. Click or 'Yes'.

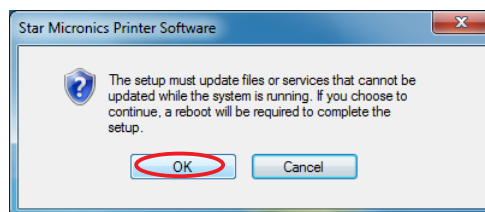
④ The following window appears. To continue, click 'Yes'.



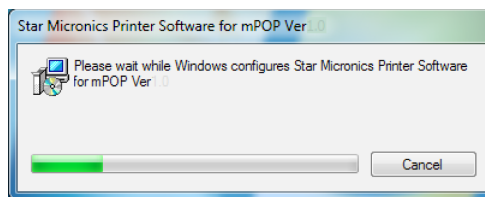
- ⑤ If the following confirmation dialog box appears, select the 'Do not close applications' option, and then click 'OK'.



- ⑥ If the following confirmation window appears, click 'OK'.



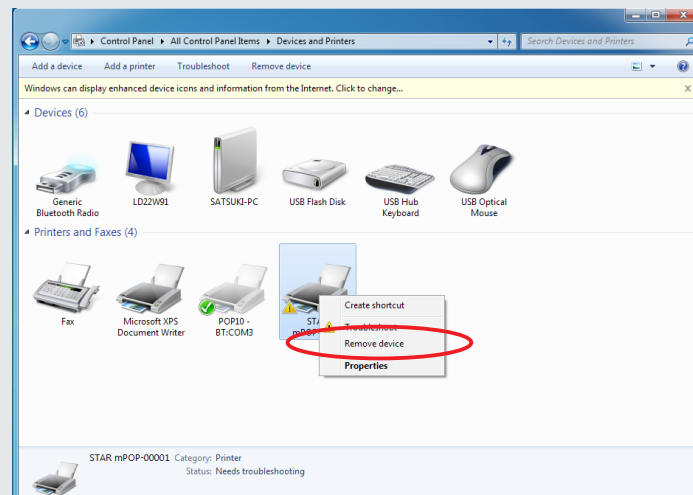
- ⑦ The uninstallation program starts and removes all the relevant software components.



❖ Note

After uninstalling the printer utility, the printer queue icon may remain in "Control Panel"- "Devices and Printers".

To delete it, right-click the printer queue icon and choose "Remove device" from the pull-down menu to delete it.



5. Revision History

Rev. No.	Date of Revision	Changes
Rev. 1.0	Aug. 2015	First edition.
Rev. 1.1	Sept. 2015	Some minor UI improvements.
Rev. 1.2	Oct.2015	Make the password changeable on the server for Star Micronics Cloud Services.
Rev. 1.3	Jan.2016	Added Barcode Reader Settings. Supported OPOS scanner devices.

Notice

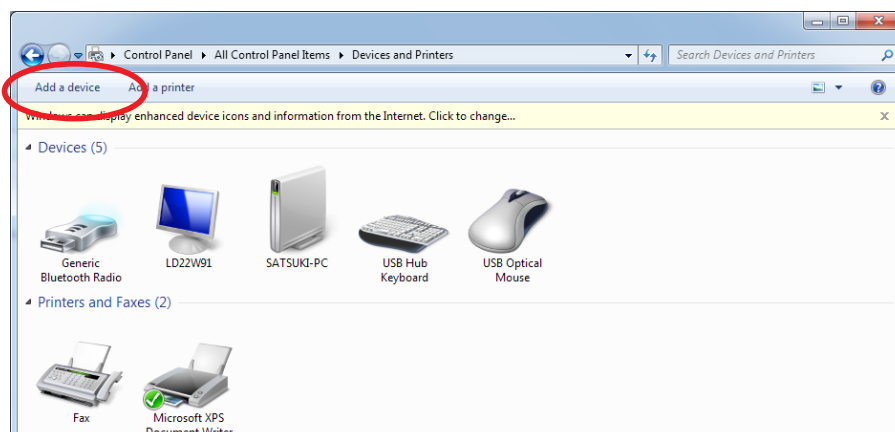
- Apple is a trademark of Apple Inc., registered in the U.S. and other countries.
- Android is a trademark of Google Inc.
- Company and product names are trademarks or registered trademarks of their respective companies.
- Reproduction of any part of this documentation is prohibited.
- The contents of this documentation are subject to change without notice.
- We can assume no responsibility for any results which may come out of the usage instructed in this documentation.

Appendix 1. Pairing with Bluetooth in Windows

Follow the appropriate procedure.

❖ In Windows 7 / 8 / 8.1 / 10

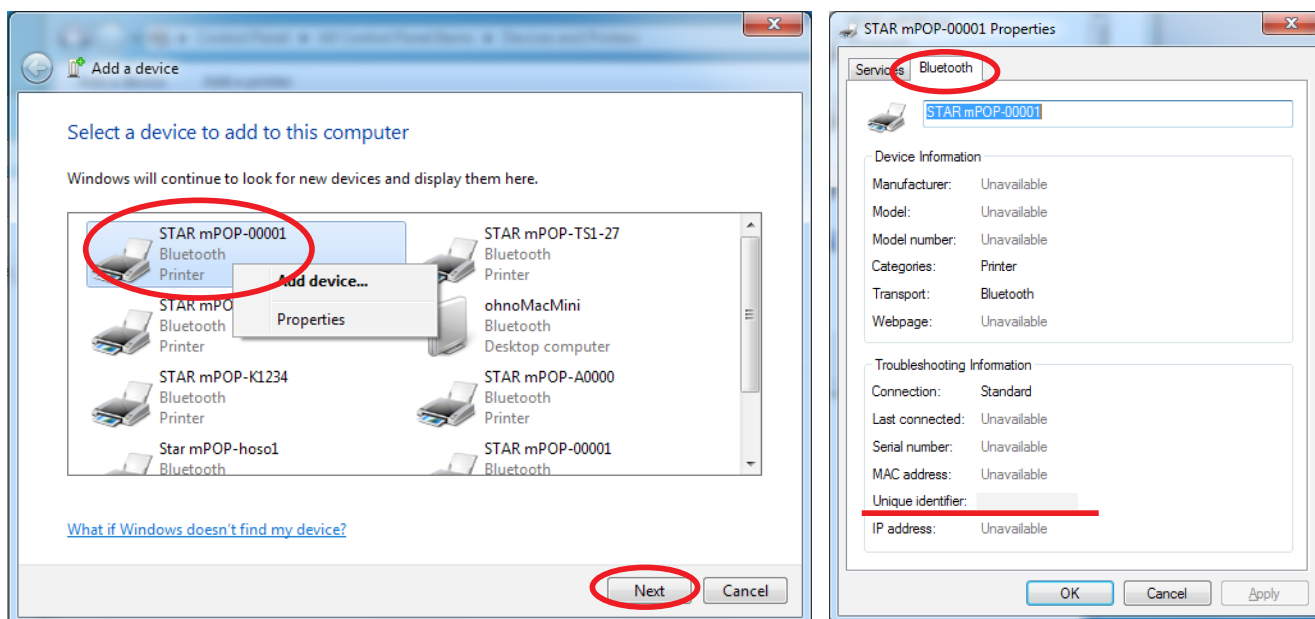
1. On the Control Panel, click "Devices and Printers". And click "Add a Device".



2. When the Pair with a wireless device window is displayed, set up the printer as instructed on the screen*, and then click [Next].

* See the "On-line Manual" for more information on operating the printer.

3. Select the Bluetooth device you want to add from the list of devices displayed, and then click [Next]. If multiple Bluetooth devices are found, you can right-click the printer, select [Properties], and then check the Bluetooth address to specify the printer you want to pair.

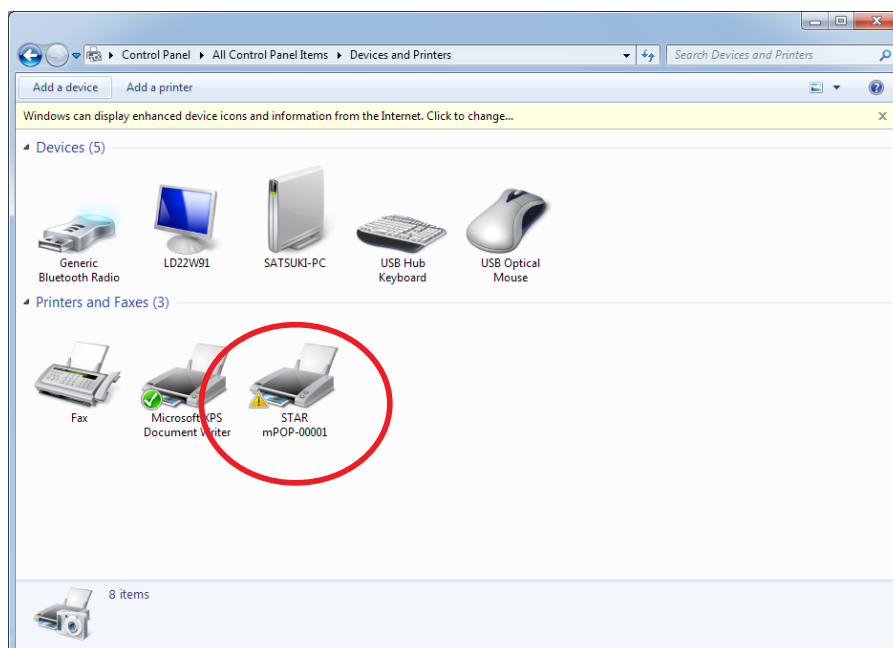


Checking the printer's Bluetooth address

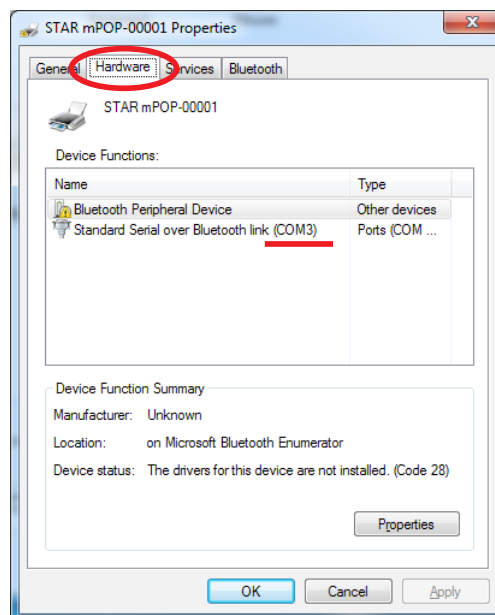
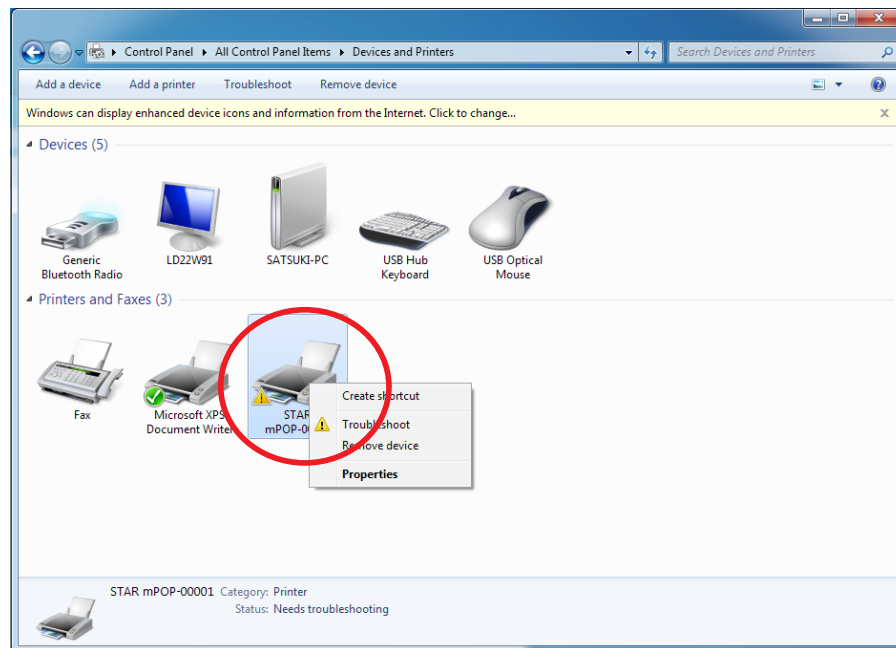
The Bluetooth address is listed on the test print sheet.

Please refer to the separate manual "On-line Manual" for the test printing method.

- When pairing is complete, the printer is added to the Printers and Devices screen.



- To check the virtual COM port assigned by pairing the Bluetooth device, go to the Devices and Printers screen, and then check the "Hardware" tab in Properties for the device that was added.





URL: <http://www.starmicronics.com/support/>